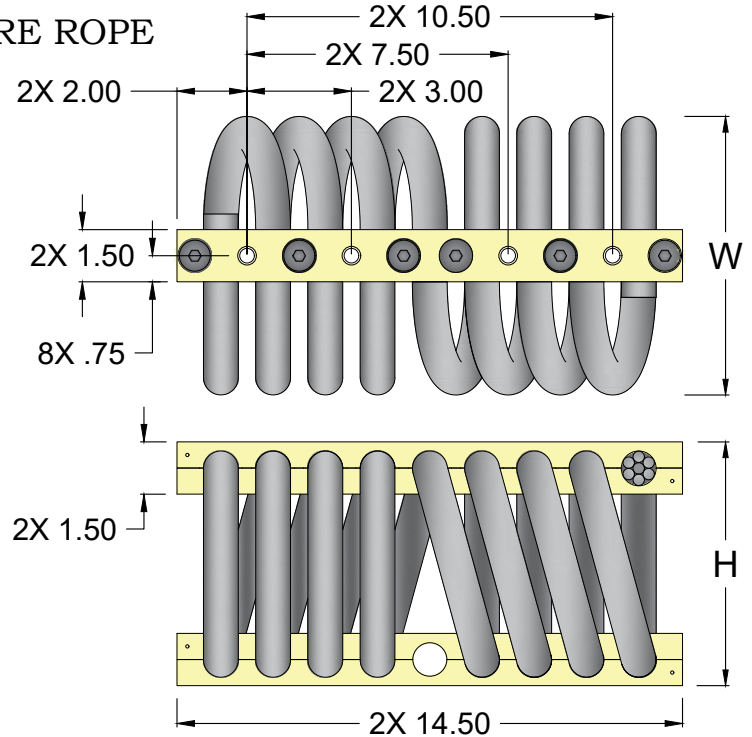
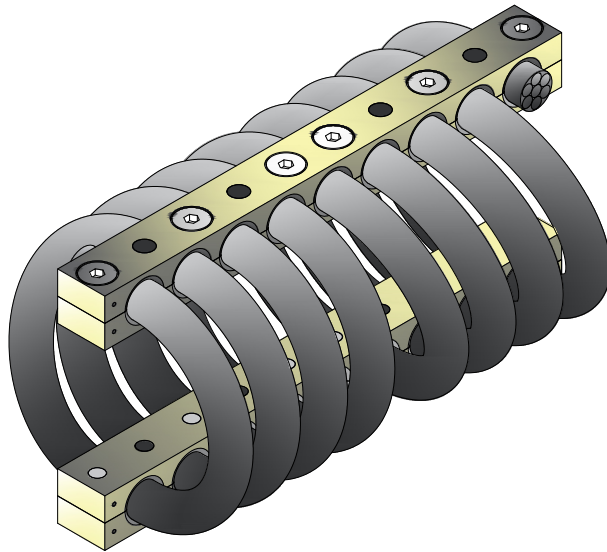


CB1800 SERIES

1" WIRE ROPE



NOTES

1. ALL DIMENSIONS ARE IN INCHES. INTERPRET PER ANSI Y14
2. ALL DIMENSIONS ARE NOMINAL AND FOR REFERENCE ONLY

ISOLATOR PART NO.	NOMINAL H +/- 0.12 (in)	NOMINAL W +/- 0.12 (in)	LOAD MODE	SHOCK AVERAGE K (lb/in)	VIBRATION AVERAGE K (lb/in)	MAX. RATED DYNAMIC TRAVEL (lb/in)
CB1800-15-[]	5.25	5.50	COMPRESSION	12100	32000	2.00
			SHEAR/ROLL	6220	6000	2.00
			45 DEG. C/R	7190	22800	2.40
CB1800-17-[]	6.00	6.50	COMPRESSION	9300	22400	2.40
			SHEAR/ROLL	4470	4280	2.40
			45 DEG. C/R	5020	1400	3.20
CB1800-20-[]	6.25	7.00	COMPRESSION	5910	13600	2.80
			SHEAR/ROLL	2840	2480	2.80
			45 DEG. C/R	3250	8800	3.60
CB1800-25-[]	7.00	8.00	COMPRESSION	4200	10000	3.20
			SHEAR/ROLL	2000	1800	3.20
			45 DEG. C/R	2400	6800	4.20
CB1800-30-[]	7.50	8.25	COMPRESSION	3080	7600	3.60
			SHEAR/ROLL	1440	1300	3.60
			45 DEG. C/R	1820	5200	4.80
CB1800-40-[]	8.50	9.25	COMPRESSION	2050	5840	4.00
			SHEAR/ROLL	870	960	4.00
			45 DEG. C/R	1080	3040	6.40
CB1800-50-[]	9.50	10.25	COMPRESSION	1020	4080	5.00
			SHEAR/ROLL	550	600	5.00
			45 DEG. C/R	650	2000	7.40



JOB NAME:

CUSTOMER :

CUSTOMER P.O.:

SALES ORDER:

MODEL CB1800 SERIES WIRE ROPE ISOLATOR



VMC GROUP
CONTROLLED ENVIRONMENT SOLUTIONS™

Bloomington, NJ Houston, TX Corona, CA Wind Gap, PA

DRAWING NO.:

REVISION:

SHEET:

SCALE :

1 OF 2

NONE

CB [] 1800 [] - 30 [] - T2

— MOUNTING HOLE OPTIONS

OF COILS (BLANK = 8 COILS)

FAMILY SERIES SIZE (-15 THRU -50)

SPECIAL REQUIREMENTS (D*, R, F, J**)

— FAMILY SERIES

WIRE ROPE REQUIREMENTS

BLANK = 302 STAINLESS STEEL (STANDARD), OR G, OR S

OF COILS (PATTERN OR PROFILE TO MATCH)

FAMILY NAME

SPECIAL REQUIREMENTS

D	DFARS*
F	THREAD FREE CABLE
G	GALVANIZED CABLE
J	ALT STYLE CONSTRUCTION**
M	METRIC INSERTS
R	RoHS
S	STAINLESS STEEL TOTAL

* DFARS COMPLIANT RAW MATERIAL COMES FROM A LIMITED GROUP OF APPROVED SUPPLIERS AND IS NOT REQUIRED ON STANDARD PARTS.

** SUBJECT TO MANUFACTURER'S DISCRETION. CONTACT VMC FOR APPLICABILITY.

FEATURES & BENEFITS:

- WIDE RANGE OF AVAILABLE SIZES PERMITS ATTACHMENT TO ALMOST ANY MACHINERY OR ENCLOSURE REGARDLESS OF WEIGHT.
- COMPACT, LOW-PROFILE DESIGN AND THE ABILITY TO ATTENUATE HEAVY SHOCK LOADS WITH MINIMUM DEFLECTION ALLOWS USE WHERE SPACE IS AT A PREMIUM.
- THREE-PLANE, ALL-AXIS ISOLATION MEANS THAT EQUIPMENT IS FREE TO MOVE IN ANY DIRECTION - VERTICALLY, HORIZONTALLY, AND Laterally.
- CUSTOM WINDING, LOOP COUNT AND MOUNTING FEATURES ARE AVAILABLE TO MEET SPECIFIC REQUIREMENTS.
- OPERATING TEMPERATURE RANGE -400F TO +700F.

STANDARD MATERIALS / FINISHES:

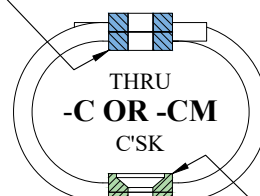
- **WIRE ROPE MATERIALS:** SERIES 302 STAINLESS STEEL.
- **BAR MATERIALS:** ALUMINUM ALLOY 6061-T6, -T6510, OR -T6511 PER SAE AMS4113, SAE AMS4150, OR ASTM B221 WITH CHEMICAL CONVERSION COATING PER MIL-DTL-5541, CLASS 1A.

SPECIAL OPTIONS:

- **WIRE ROPE MATERIALS:** GALVANIZED, IMPROVED PLOW WIRE, PLASTIC FILLED VALLEY WIRE, INCONEL 600, STAINLESS STEEL TYPE 316, STAINLESS STEEL TYPE 305.
- **BAR MATERIALS:** STAINLESS STEEL, CRES TYPE 302, 303, 304, OR 304L WITH FINISH PASSIVATED PER QQ-P-35C TYPE II.
- **MOUNTING CONFIGURATIONS:** INSERTS, THREAD TYPES, CLEARANCE HOLES.
- CONTACT VMC FOR OTHER MATERIAL AVAILABILITIES.

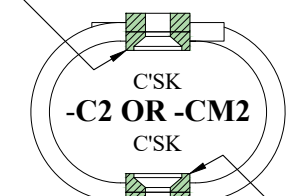
MOUNTING HOLE OPTIONS:**M = METRIC** M C'SK = Ø.535 X 90° M INSERT = M12 X 1.75

4X Ø.535 THRU HOLE



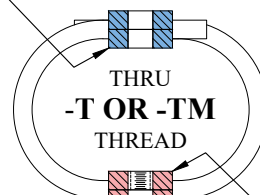
4X Ø.535 X C'SK 82°

4X Ø.535 X C'SK 82°



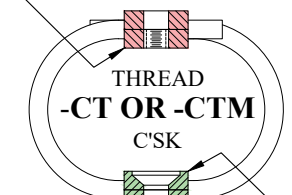
4X Ø.535 X C'SK 82°

4X Ø.535 THRU HOLE



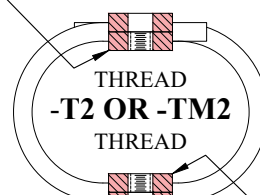
4X INSERT 1/2 - 13

4X INSERT 1/2 - 13



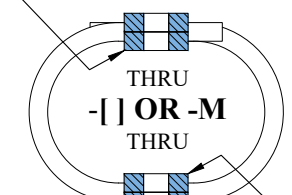
4X Ø.535 X C'SK 82°

4X INSERT 1/2 - 13



4X INSERT 1/2 - 13

4X Ø.535 THRU HOLE



4X Ø.535 THRU HOLE



JOB NAME:

CUSTOMER :

CUSTOMER P.O.:

SALES ORDER:

MODEL CB1800 SERIES
WIRE ROPE ISOLATOR



VMC GROUP
CONTROLLED ENVIRONMENT SOLUTIONS™

Bloomington, NJ Houston, TX Corona, CA Wind Gap, PA

DRAWING NO.:

REVISION:

SHEET:

SCALE :

2 OF 2

NONE